



EXTERNAL DIAMETER	WALL THICKNESS	MTS/ ROLL	CODE	€
----------------------	-------------------	--------------	------	---

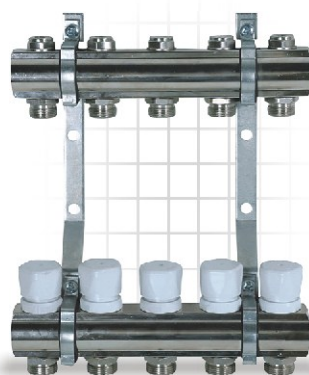
CROSS-LINKED POLYETHYLENE PIPE FOR FLOOR HEATING DIFFUSIONSDICHTES VERNETZTES POLYETHYLENROHR, FÜR FUSSBODENHEIZUNGEN



Ø 17 OXYGEN BARRIER	2,00	200	770501720
Ø 17 OXYGEN BARRIER	2,00	600	770511720
Ø 20 OXYGEN BARRIER	2,00	200	770502020
Ø 20 OXYGEN BARRIER	2,00	440	770512020

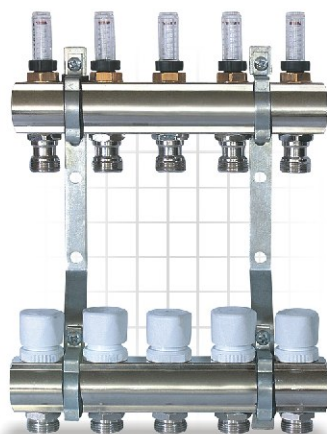
OUTLETS	CODE	€
---------	------	---

MANIFOLDS FOR UNDERFLOOR HEATING 1", NICKEL PLATED FUSSBODENVERTEILER 1", MESSING ENTSPANNT, VERNICKELT



2 outlets x 1" x 3/4	589384400023
3 outlets x 1" x 3/4	589384400033
4 outlets x 1" x 3/4	589384400043
5 outlets x 1" x 3/4	589384400053
6 outlets x 1" x 3/4	589384400063
7 outlets x 1" x 3/4	589384400073
8 outlets x 1" x 3/4	589384400083
9 outlets x 1" x 3/4	589384400093
10 outlets x 1" x 3/4	589384400103
11 outlets x 1" x 3/4	589384400113
12 outlets x 1" x 3/4	589384400123

MANIFOLDS FOR UNDERFLOOR HEATING 1" WITH FLOWMETERS, NICKEL PLATED - FUSSBODENVERTEILER 1" MIT DURCHFLUSSMESSERN, MESSING ENTSPANNT & VERNICKELT



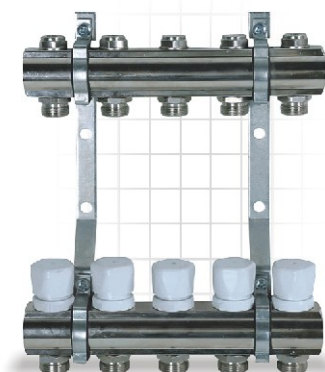
2 outlets x 1" x 3/4	589344400023
3 outlets x 1" x 3/4	589344400033
4 outlets x 1" x 3/4	589344400043
5 outlets x 1" x 3/4	589344400053
6 outlets x 1" x 3/4	589344400063
7 outlets x 1" x 3/4	589344400073
8 outlets x 1" x 3/4	589344400083
9 outlets x 1" x 3/4	589344400093
10 outlets x 1" x 3/4	589344400103
11 outlets x 1" x 3/4	589344400113
12 outlets x 1" x 3/4	589344400123

OUTLETS

CODE

€

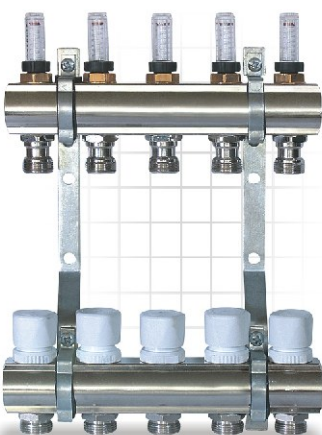
NEW
PRODUCT



MANIFOLDS FOR UNDERFLOOR HEATING 1 1/4", NICKEL PLATED FUSSBODENVERTEILER 1 1/4", MESSING ENTSPANNT, VERNICKELT

2 outlets x 1 1/4 x 3/4	589385400023
3 outlets x 1 1/4 x 3/4	589385400033
4 outlets x 1 1/4 x 3/4	589385400043
5 outlets x 1 1/4 x 3/4	589385400053
6 outlets x 1 1/4 x 3/4	589385400063
7 outlets x 1 1/4 x 3/4	589385400073
8 outlets x 1 1/4 x 3/4	589385400083
9 outlets x 1 1/4 x 3/4	589385400093
10 outlets x 1 1/4 x 3/4	589385400103
11 outlets x 1 1/4 x 3/4	589385400113
12 outlets x 1 1/4 x 3/4	589385400123

NEW
PRODUCT



MANIFOLDS FOR UNDERFLOOR HEATING 1 1/4" WITH FLOWMETERS, NICKEL PLATED - FUSSBODENVERTEILER 1 1/4" MIT DURCHFLOUSSMESSERN, MESSING ENTSPANNT & VERNICKELT

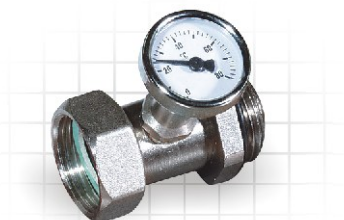
2 outlets x 1 1/4 x 3/4	589345400023
3 outlets x 1 1/4 x 3/4	589345400033
4 outlets x 1 1/4 x 3/4	589345400043
5 outlets x 1 1/4 x 3/4	589345400053
6 outlets x 1 1/4 x 3/4	589345400063
7 outlets x 1 1/4 x 3/4	589345400073
8 outlets x 1 1/4 x 3/4	589345400083
9 outlets x 1 1/4 x 3/4	589345400093
10 outlets x 1 1/4 x 3/4	589345400103
11 outlets x 1 1/4 x 3/4	589345400113
12 outlets x 1 1/4 x 3/4	589345400123

DIMENSION

CODE

PACK

€



MANIFOLD CIRCUIT NIPPLE WITH THERMOMETER KUPPLUNG MIT THERMOMETER

1" x 1"

670150011

75

* Thermometer excluded / Preis ohne Thermometer



MANIFOLD CIRCUIT NIPPLE WITH THERMOMETER KUPPLUNG MIT THERMOMETER

3/4" x 3/4"

670163434

100

* Thermometer excluded / Preis ohne Thermometer



THERMOMETER

30 mm

670130000

480

DIMENSION	CODE	PACK	€
-----------	------	------	---



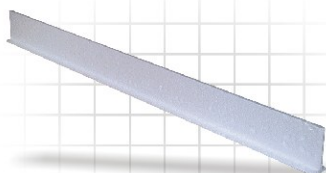
ADJUSTABLE MANIFOLD CABINET - VERTEILERSCHRANK EINSTELLBAR, (HÖHE + TIEFE) PULVERBESCHICHTET RAL 9010 WEISS

40 x 69 x 11,5	670094069	1
60 x 69 x 11,5	670096069	1
75 x 69 x 11,5	670097569	1
90 x 69 x 11,5	670099069	1
100 x 69 x 11,5	670091069	1



SYSTEM BOARD (INFLATED POLYSTYRENE) WÄRME UND TRITTSCHALLDÄMMUNG

135 x 75 cm		
water proof film	670060001	14,175 m ²
135 x 75 cm Dampfdicht		



EXPANSION JOINT FUGELEISTE

1000 X 120 X 12 mm	670000006
--------------------	-----------



PERIMETRIC INSULATING TAPE - RANDDÄMMSTREIFEN

150 X 8 mm	670060002	50
with PE film & shelf adhesive - mit PE-film selbstklebend		



SLIP - ON CLIP • STECKNADEL

Clip	800030001	100
------	-----------	-----

DESCRIPTION

CODE

PACK

€



ACTUATOR - STELLANTRIEB

24 V	670050000001
230 V	670050000002



PLASTICIZER - ESTRICHZUSATZMITTEL

Plasticizer	6700000003	20
-------------	------------	----



PP-R FIBERS • POLYPROPYLEN FASER

Fibers/Faser	670080000	900gr
--------------	-----------	-------



PIPE REEL - ABROLLER FÜR SYSTEMHEIZROHR

670050001

DIMENSION

CODE

FLOW

€

THREE WAY MIXING VALVE • 3 - WEGE MISCHER



1"	670100001	12m ³ /h
1 1/4"	670100114	18m ³ /h
1 1/2"	670100112	28m ³ /h
2"	670100002	60m ³ /h

FOUR WAY MIXING VALVE • 4 - WEGE MISCHER



1"	670110001	12m ³ /h
1 1/4"	670110114	18m ³ /h
1 1/2"	670110112	28m ³ /h
2"	670110002	60m ³ /h

NEW
PRODUCT



ELECTRIC VALVE MOTOR - STELLMOTOR FÜR DIE MISCHER

1" - 1 1/2 - 2"	670120000
-----------------	-----------

NEW
PRODUCT



PRE-ADJUSTABLE ELECTRIC VALVE MOTOR STELLMOTOR FÜR DIE MISCHER VOREINSTELLBAR

1" - 1 1/2 - 2"	670000005
-----------------	-----------



COMPACT MIXING UNIT MISCHEINHEIT FÜR FUSSBODEN-HEIZKÖRPER-HEIZUNG

670240000

DESCRIPTION

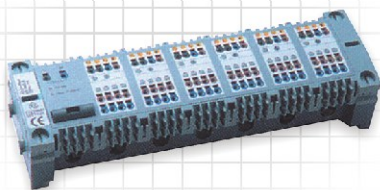
CODE

€



WIRELESS THERMOSTAT COMMUNICATION SYSTEM FUNKGESTEUERTES ANSCHLUSSSYSTEM FÜR DIE FUNK-RAUMTHERMOSTATE UND DIE STELLANTRIEBE

Basis wireless receiver 6/13	670170002
Anschlussbasis 6/13	
Wireless room thermostat	670170001
Funk Temperaturregler	



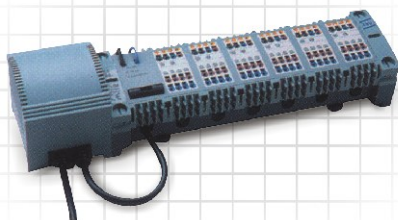
BASIS 230V - LEISTE 230V

Basis 230 (2000-6)	670180001
--------------------	-----------



THERMOSTAT

Thermostat AR 20 / 230 V	670180002
Raumthermostat AR 40 / 24 V	670180003



BASIS ADAPTER 230V/24V ANSCHLUSSSYSTEM FÜR DIE RAUMTHERMOSTATE UND DIE STELLANTRIEBE MIT TRAFO 230V-24V

Basis adapter 6/13	670180000
--------------------	-----------



PUMP MODULE - PUMPENMODUL

24V PL4000	670230000
230V PL2000	670230001

DESCRIPTION

CODE

€



**DIGITAL INTAKE UNIT FOR COMPENSATION
DIGITALE TEMPERATURABGLEICH**

670200000



**ANALOGUE COMPENSATION UNIT
KOMPLETTE EINRICHTUNG MIT
KOMPONENTEN FÜR
DIGITALEN-TEMPERATURABGLEICH**

670210000



**DIGITAL COMPENSATION UNIT
KOMPLETTE EINRICHTUNG MIT
KOMPONENTEN FÜR
ANALOGEN-TEMPERATURABGLEICH**

670220000



CUT - OFF THERMOSTAT • ANLEGETHERMOSTAT

670140000



UFH - COOLING THERMOSTAT RAUMTHERMOSTAT FÜR HEIZUNG - KÜHLUNG

TYPE	CODE	€
THERMOSTAT APHK 4010 K (24 Volt)	670500001	



UFH - COOLING ACTIVATOR WECHSELMODUL HEIZUNG - KÜHLUNG

UFH - Cooling activator	670510001	



AIR - WATER HEAT PUMPS WÄRMEPUMPEN LUFT - WASSER

30 RHV 006	670520006	
30 RHV 008	670520008	
30 RHV 011	670520011	
30 RHV 011 - 9	670520911	
30 RHV 013	670520013	
30 RAJ 9002 (Control)	670520001	



ENERGY CONTROLER - STEUEREINHEIT

XB 20	670530020	
XB 30	670530030	



TYPE

CODE

€

FAN COILS - LÜFTUNGSGERÄT



42 NM 25 SF	670604225
42 NM 33 SF	670604233
42 NM 43 SF	670604243
42 NM 50 SF	670604250
42 NM 60 HF	670604260
42 NM 75 HF	670604275

(Floor or ceiling fan coils without stands or remote control)

FAN COILS - LÜFTUNGSGERÄT (EINBAU)



42 NF 25 SF	670614225
42 NF 33 SF	670614233
42 NF 43 SF	670614243
42 NF 50 SF	670614250
42 NF 60 HF	670614260
42 NF 75 HF	670614275

(Floor or ceiling fan coils without remote control)

CONTROLS - COMPONENTS FOR FAN COILS KOMPONENTE FÜR LUFTUNGSGERÄTE



42 N 9002	Control/ Check thermostat A Temperaturregler	670650001
RAB 10	Wall control/ Thermostat Raumthermostat	670650002
42 N 9029	Stands with covers Deckel Systemssockel	670650003

(For installations in commercial units, offices etc.)

ON REQUEST