

DIN 8077 -78 • EN 12202

DIMENSION	CODE	PACK	€
-----------	------	------	---

PIPE - PN 20 • ROHR - PN 20



Ø 20 x 3,4	780010020	100
Ø 25 x 4,2	780010025	80
Ø 32 x 5,4	780010032	60
Ø 40 x 6,7	780010040	40
Ø 50 x 8,4	780010050	20
Ø 63 x 10,5	780010063	12
Ø 75 x 12,5	780010075	8
Ø 90 x 15,0	780010090	8
Ø 110 x 18,4	780010110	4

NEW
PRODUCT



PP-R PIPE WITH ALUMINIUM • ALUVERSTÄRKTES PPR-ROHR

Ø 20 x 3,4	780060020
Ø 25 x 4,2	780060025
Ø 32 x 5,4	780060032
Ø 40 x 6,7	780060040
Ø 50 x 8,4	780060050
Ø 63 x 10,5	780060063
Ø 75 x 12,5	780060075



PIPE - PN 20 (BLACK) • PPR ROHR - PN 20 (SCHWARZ)

Ø 20 x 3,4	780040020	100
------------	-----------	-----



PIPE - PN 20 IN ROLLS • PPR ROHRE PN 20 IN ROLLEN

Ø 20 x 3,4 (Green/Grün)	780030020	100
Ø 20 x 3,4 (Black/Schwarz)	780050020	100



DIN 8077 -78 • EN 12202

DIMENSION	CODE	PACK	€
-----------	------	------	---

ELBOW 90° - PN 25 • WINKEL 90° - PN 25



20	790030020	140
25	790030025	80
32	790030032	50
40	790030040	20
50	790030050	12
63	790030063	16
75	700030075	2
90	700030090	2
110	700030110	2

ELBOW 45° - PN 25 • WINKEL 45° - PN 25



20	790040020	140
25	790040025	80
32	790040032	50
40	790040040	25
50	790040050	15
63	790040063	16
75	700040075	2

SOCKET - PN 25 • MUFFE - PN 25



20	790020020	180
25	790020025	135
32	790020032	70
40	790020040	40
50	790020050	25
63	790020063	20
75	700020075	2
90	700020090	2
110	700020110	2



DIMENSION	CODE	PACK	€
-----------	------	------	---

TEE - PN 25 • T - STÜCK - PN 25



20/20/20	790070020	100
25/25/25	790070025	60
32/32/32	790070032	30
40/40/40	790070040	16
50/50/50	790070050	10
63/63/63	790070063	14
75/75/75	700050075	1
90/90/90	700050090	1
110/110/110	700050110	1

REDUCING BUSH - PN 25 • REDUZIERSTÜCK - PN 25



25 x 20	790082520	200
32 x 20	790083220	120
32 x 25	790083225	90
40 x 25	790084025	80
40 x 32	790084032	80
50 x 32	790085032	40
50 x 40	790085040	40
63 x 25	790086325	20
63 x 32	790086332	20
63 x 40	790086340	20
63 x 50	790086350	20
75 x 50	700087550	5
75 x 63	700087563	5
90 x 63	700089063	5
90 x 75	700089075	5
110 x 75	700081175	5
110 x 90	700081190	5

BYPASS - PN 20 • BYPASS - PN 20



20	790050020	100
25	790050025	60
32	790050032	32



DIMENSION	CODE	PACK	€
-----------	------	------	---

REDUCING TEE - PN 25 • REDUZIER-TEESTÜCK - PN 25



25 x 20 x 25	790060001	60
25 x 20 x 20	700060017	50
25 x 25 x 20	700060018	50
32 x 25 x 32	790060003	30
32 x 32 x 20	700060024	50
32 x 25 x 25	700060019	50
32 x 20 x 20	700060025	50
32 x 25 x 20	700060022	50
32 x 20 x 25	700060023	50
32 x 32 x 25	700060021	50
32 x 20 x 32	790060002	30
40 x 25 x 40	790060016	20
40 x 32 x 40	790060004	20
50 x 32 x 50	790060007	10
50 x 40 x 50	790060005	10
63 x 25 x 63	790060010	14
63 x 32 x 63	790060015	14
63 x 40 x 63	790060020	14
63 x 50 x 63	790060006	14
75 x 50 x 75	700060011	1
75 x 63 x 75	700060012	1
90 x 63 x 90	700060013	1
90 x 75 x 90	700060008	1
110x75x110	700060014	1
110x90x110	700060009	1

CAP - PN 25 • KAPPE - PN 25



20	790090020	200
25	790090025	200
32	790090032	100
40	790090040	50
50	790090050	40
63	790090063	40
75	700090075	2
90	700090090	2
110	700090110	2

DIMENSION	CODE	PACK	€
-----------	------	------	---



COUPLING MALE - PN 25 • KUPPLUNG AG - PN 25

20 x 1/2"	790112012	90
20 x 3/4"	790112034	60
25 x 1/2"	790112512	60
25 x 3/4"	790112534	60
32 x 3/4"	790113234	30
32 x 1"	790113201	30
40 x 1"	790114001	16
40 x 1 1/4"	790114014	16
50 x 1 1/4"	790115014	12
50 x 1 1/2"	790115012	10
63 x 1 1/2"	790116312	10
63 x 2"	790116302	10
75 x 2 1/2"	700117512	2



COUPLING FEMALE - PN 25 • KUPPLUNG IG - PN 25

20 x 1/2"	790122012	100
20 x 3/4"	790122034	70
25 x 1/2"	790122512	70
25 x 3/4"	790122534	70
32 x 3/4"	790123234	30
32 x 1"	790123201	30
40 x 1"	790124001	16
40 x 1 1/4"	790124014	16
50 x 1 1/4"	790125014	10
50 x 1 1/2"	790125012	12
63 x 1 1/2"	790126312	10
63 x 2"	790126302	10
75 x 2 1/2"	700127512	2



FEMALE TEE - PN 25 • TEE - STÜCK IG - PN 25

20x1/2" x 20	790162012	70
25x1/2" x 25	790162512	36
25x3/4" x 25	790162534	36
32 x 1" x 32	790163201	20



DIMENSION

CODE

PACK

€



MALE TEE - PN 25 • TEE - STÜCK AG - PN 25

20 x 1/2" x 20	790152012	60
25 x 1/2" x 25	790152512	36
25 x 3/4" x 25	790152534	36
32 x 1" x 32	790153201	20



FEMALE ELBOW - PN 25 • WINKEL IG - PN 25

20 x 1/2"	790142012	80
25 x 1/2"	790142512	40
25 x 3/4"	790142534	40
32 x 1"	790143201	24



MALE ELBOW - PN 25 • WINKEL AG - PN 25

20 x 1/2"	790132012	70
25 x 1/2"	790132512	40
25 x 3/4"	790132534	40
32 x 1"	790133201	24



WALL PLATE ELBOW 90° - PN 25 WANDANSCHUSSWINKEL 90° - PN 25

20 X 1/2"	790172012	70
-----------	-----------	----



ELBOW M/F 90° - PN 25 • WINKEL AG/IG 90° - PN 25

20	700190020	140
----	-----------	-----

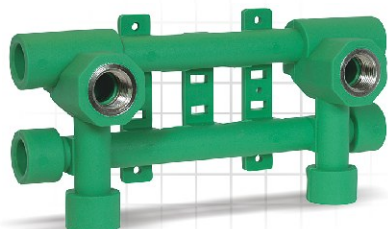


DIMENSION

CODE

PACK

€



ALIGNING WATER INTAKE TEMPLATE HAHN - FIXIERUNGSANLAGE

DIMENSION	CODE	PACK	€
Ø 20 x 1/2	790210000	16	

Delivered with four male caps Ø 20.
4 Stopfen Ø 20 werden mitgeliefert



SUPPLY SADDLE - ANSTECHSATTEL

63 x 1/2 x 25	790226312	100
63 x 3/4 x 25	790226334	90
75 x 1/2 x 25	790227512	100
75 x 3/4 x 25	790227534	90

NEW
PRODUCT



CONVEX SOCKET - KRUMME MUFFE

63-20	700406320
63-25	700406325
* 63-32	790406332
75-20	700407520
75-25	700407525
* 75-32	790407532
90-20	700409020
90-25	700409025
* 90-32	790409032
* 90-40	790409040
110-20	700401120
110-25	700401125
* 110-32	790401132
* 110-40	790401140
(Articles indicated with an asterisk will be available shortly)	



DIMENSION

CODE

PACK

€



STOP COCK - PN 25 • ABSPERRBARER HAHN - PN 25

20	790100020	16
25	790100025	16



TAP UPPER PART - HAHNOBERTEIL

1/2"	610000015	70
------	-----------	----



ROTATIVE VALVE ABSPERRBARER HAHN MIT GRÜNEM VERSTELLRAD

Ø 20	790100120
Ø 25	790100125



SPHERICAL VALVE - ABSPERRBARER KUGELHAHN

Ø 20	700390020	12
Ø 25	700390025	12
Ø 32	700390032	12
Ø 40	700390040	12
Ø 50	700390050	12
Ø 63	700390063	12
Ø 75	700390075	4
Ø 90	700390090	4



EXTENSION FOR STOP COCK - SPINDELVERLÄNGERUNG FÜR DEN ABSPERRBAREN HAHN

20/25	542240000001	100
-------	--------------	-----



DIMENSION

CODE

PACK

€

NEW
PRODUCT



BRASS COUPLING FEMALE - MESSING KUPPLUNG IG

20 X 1/2	700412012	80
25 X 3/4	700412534	60
32 X 1	700413201	40
40 X 1 1/4	700414014	20

NEW
PRODUCT



BRASS COUPLING MALE - MESSING KUPPLUNG AG

20 X 1/2	700422012	60
25 X 3/4	700422534	40
32 X 1	700423201	24
40 X 1 1/4	700424014	1



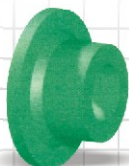
ELECTROCKET - ELEKTROMUFFE

20	700230020	20
25	700230025	15
32	700230032	10
40	700230040	6
50	700230050	3
63	700230063	2



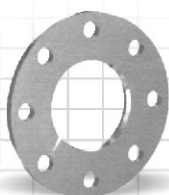
HOLE REPAIRING PLUG • LOCH - FIXIERUNGSSTOPFEN

7/11	700220711	20
------	-----------	----



FLANGE NECK - KUNSTOFFFLANSCH

Ø 75	700070075	1
Ø 90	700070090	1
Ø 110	700070110	1



METAL GASKET - METALLISCHER FLANSCH

Ø 75	700210075	1
Ø 90	700210090	1
Ø 110	700210110	1



DIMENSION	CODE	PACK	€
-----------	------	------	---

PIPE HOLDER - ROHRHALTERUNG



20	790200020	100
25	790200025	100
32	790200032	50
40	790200040	50
50	790200050	50
63	790200063	50

WELDING TOOL FOR SADDLE KRUMME STECHFORM FÜR DEN ANSTECHESSATTEL



50/25	700275025	1
63/25	700276325	1
75/25	700277525	1
Drill/Bohrer Ø 25	700250001	1
Calibrating Scraper Ø 25 Fraswerkzeug Ø 25	700250002	1

SOCKET FUSION WELDING MACHINE - POLYFUSION MASCHINE



Machine	700180001	1
Steel Case	700190004	1
Ø 7	700180007	1
Ø 11	700180011	1
20	700180020	1
25	700180025	1
32	700180032	1
40	700180040	1
50	700180050	1
63	700180063	1
75	700180075	1
90	700180090	1
110	700180110	1
Shear 20-32	700190001	1

NEW
PRODUCT



ALUMINIUM PIPE SCRAPER - FLACHSPITZER FÜR ALU-PPR ROHRE

20-25	700502025	10
32-40	700503240	10
40-50	700504050	1
63-75	700506375	1

MECHANICAL COMPRESSION BRASS FITTINGS FOR PP-PVC-PE MESSING KUPPLUGEN FÜR PP-PVC-PE ROHRE (NUR KALTWASSER)



DIMENSION

CODE

€

COUPLING MALE - AG KUPPLUNG



Ø 20 x 1/2"	190012012
Ø 25 x 3/4"	190012534
Ø 32 x 1"	190013201
Ø 40 x 1 1/4"	190014014
Ø 50 x 1 1/2"	190015012
Ø 63 x 2"	190016302

COUPLING FEMALE - IG KUPPLUNG



Ø 20 x 1/2"	190022012
Ø 25 x 3/4"	190022534
Ø 32 x 1"	190023201
Ø 40 x 1 1/4"	190024014
Ø 50 x 1 1/2"	190025012
Ø 63 x 2"	190026302

STRAIGHT COUPLING - KUPPLUNG



Ø 20 x 20	190032020
Ø 25 x 25	190032525
Ø 32 x 32	190033232
Ø 40 x 40	190034040
Ø 50 x 50	190035050
Ø 63 x 63	190036363



DIMENSION

CODE

€

ELBOW FEMALE - WINKEL KUPPLUNG



Ø 20 x 1/2"	190042012
Ø 25 x 3/4"	190042534
Ø 32 x 1"	190043201
Ø 40 x 1 1/4"	190044014
Ø 50 x 1 1/2"	190045012
Ø 63 x 2"	190046302

FEMALE TEE • TE - KUPPLUNG



Ø 20 x 1/2" x 20	190052012
Ø 25 x 3/4" x 25	190052534
Ø 32 x 1" x 32	190053201
Ø 40 x 1 1/4" x 40	190054014
Ø 50 x 1 1/2" x 50	190055012
Ø 63 x 2" x 63	190056302